

MITSUBOSHI

INDUSTRIAL POWER TRANSMISSION PRODUCTS CONVEYOR BELTS ENGINEERING PLASTIC



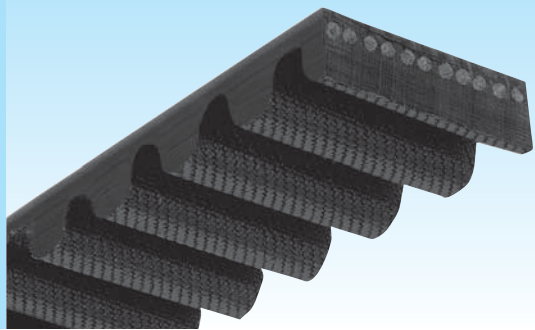
To give attentive consideration to both productivity and nature.

All sizes of Mitsubishi Conventional V-belts respectively meet the dimensional requirements as stated in ARPM/RMA IP-20.

H Series Timing Belt

Round shape belt teeth enable the distribution of load stress uniformly over the entire belt tooth. Since the belt tooth engages with the pulley groove without any interference, stress concentration at the root of the belt tooth can be eliminated. This belt can be used as an alternative for chains and gears with advantages such as :

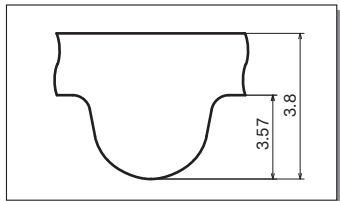
- High power transmission capacity
- Long operation life
- Quiet operation
- Cost-efficiency



Dimensions

- Tooth Shape & Product Code -

●H5M



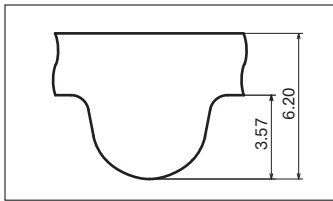
The above mentioned shapes and figures are only for reference.

H5M Standard Belt Width

Belt Width (mm)	9.0	15.0	25.0
Belt Width Code	9	15	25

600 **H5M** **15**
Belt Pitch Length Belt Type Belt Width

●H8M



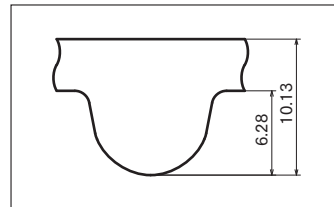
The above mentioned shapes and figures are only for reference.

H8M Standard Belt Width

Belt Width (mm)	20.0	30.0	50.0	85.0
Belt Width Code	20	30	50	85

800 **H8M** **30**
Belt Pitch Length Belt Type Belt Width

●H14M



The above mentioned shapes and figures are only for reference.

H14M Standard Belt Width

Belt Width (mm)	40.0	55.0	85.0	115.0
Belt Width Code	40	55	85	115

1610 **H14M** **40**
Belt Pitch Length Belt Type Belt Width

Standard Belt Sizes

H5M (Pitch 5 mm)

Nominal length	Number of teeth
180 H5M	36
295 H5M	59
340 H5M	68
350 H5M	70
400 H5M	80
410 H5M	82
420 H5M	84
450 H5M	90
475 H5M	95
500 H5M	100
520 H5M	104
565 H5M	113
575 H5M	115
600 H5M	120
670 H5M	134
740 H5M	148
770 H5M	154
800 H5M	160
835 H5M	167
850 H5M	170
920 H5M	184
950 H5M	190
965 H5M	193
980 H5M	196
1050 H5M	210
1270 H5M	254
1420 H5M	284
1690 H5M	338
1800 H5M	360
2000 H5M	400

- Some sizes may not be in stock. Please contact us for the stock status before placing an order.

Standard Belt Sizes

H8M (Pitch 8 mm)

Nominal length	Number of Teeth	Manufacturable Size	Nominal length	Number of teeth	Manufacturable Size
424 H8M	53	S	1248 H8M	156	S · D
480 H8M	60	S	1280 H8M	160	S · D
536 H8M	67	S · D	1304 H8M	163	S · D
560 H8M	70	S · D	1320 H8M	165	S · D
592 H8M	74	S · D	1360 H8M	170	S · D
600 H8M	75	S · D	1392 H8M	174	S · D
624 H8M	78	S · D	1400 H8M	175	S · D
632 H8M	79	S · D	1424 H8M	178	S · D
640 H8M	80	S · D	1432 H8M	179	S · D
656 H8M	82	S · D	1440 H8M	180	S · D
680 H8M	85	S · D	1480 H8M	185	S · D
720 H8M	90	S · D	1520 H8M	190	S · D
760 H8M	95	S · D	1600 H8M	200	S · D
776 H8M	97	S · D	1680 H8M	210	S · D
800 H8M	100	S · D	1696 H8M	212	S · D
840 H8M	105	S · D	1728 H8M	216	S · D
856 H8M	107	S · D	1760 H8M	220	S · D
880 H8M	110	S · D	1800 H8M	225	S · D
896 H8M	112	S · D	1896 H8M	237	S · D
912 H8M	114	S · D	1904 H8M	238	S · D
920 H8M	115	S · D	1936 H8M	242	S · D
936 H8M	117	S · D	2000 H8M	250	S · D
960 H8M	120	S · D	2080 H8M	260	S · D
968 H8M	121	S · D	2104 H8M	263	S · D
1000 H8M	125	S · D	2160 H8M	270	S · D
1040 H8M	130	S · D	2240 H8M	280	S · D
1056 H8M	132	S · D	2272 H8M	284	S · D
1064 H8M	133	S · D	2400 H8M	300	S · D
1080 H8M	135	S · D	2504 H8M	313	S · D
1120 H8M	140	S · D	2600 H8M	325	S · D
1128 H8M	141	S · D	2800 H8M	350	S · D
1152 H8M	144	S · D	3048 H8M	381	S · D
1160 H8M	145	S · D	3200 H8M	400	S · D
1200 H8M	150	S · D	3280 H8M	410	S · D
1224 H8M	153	S · D	3600 H8M	450	S · D

- S = Single-sided D = Double timing belt
- The design procedure and the defined drive capacity of single-sided timing belts are applied to the equivalent double-sided timing belts.
- Some sizes may not be in stock. Please contact us for the stock status before placing an order.

Standard Belt Sizes

H14M (Pitch 14 mm)

Nominal length	Number of teeth
784 H14M	56
826 H14M	59
924 H14M	66
966 H14M	69
1148 H14M	82
1190 H14M	85
1344 H14M	96
1400 H14M	100
1456 H14M	104
1512 H14M	108
1540 H14M	110
1568 H14M	112
1610 H14M	115
1638 H14M	117
1652 H14M	118
1680 H14M	120
1736 H14M	124
1778 H14M	127
1890 H14M	125
1932 H14M	138
1946 H14M	139
2002 H14M	143
2100 H14M	150
2198 H14M	157
2310 H14M	165
2450 H14M	175
2590 H14M	185
2940 H14M	210
3150 H14M	225
3500 H14M	250
4578 H14M	327

- Some sizes may not be in stock. Please contact us for the stock status before placing an order.